

Features

Design ideas respond to school community suggestions and needs, recognising the links between physical skills development and classroom performance

Encourages active exploration of natural and creative environments

Opportunities for imaginative, sensory and investigative play

Variety of physical skills challenges

Environment zones for active play and quiet play

Additional equipment for two playground areas

Paths and tracks connect features and create circuits, improving flow between activity areas

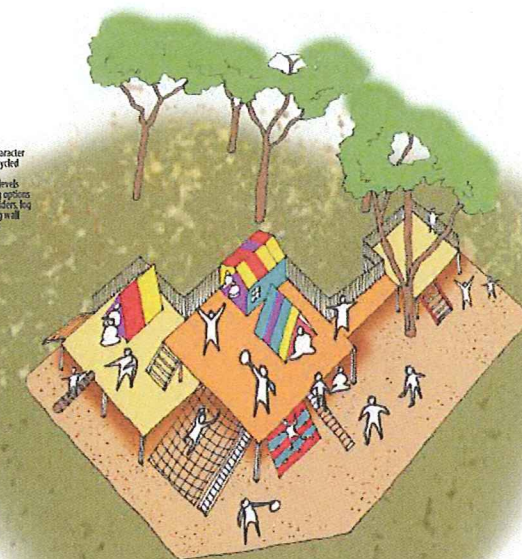
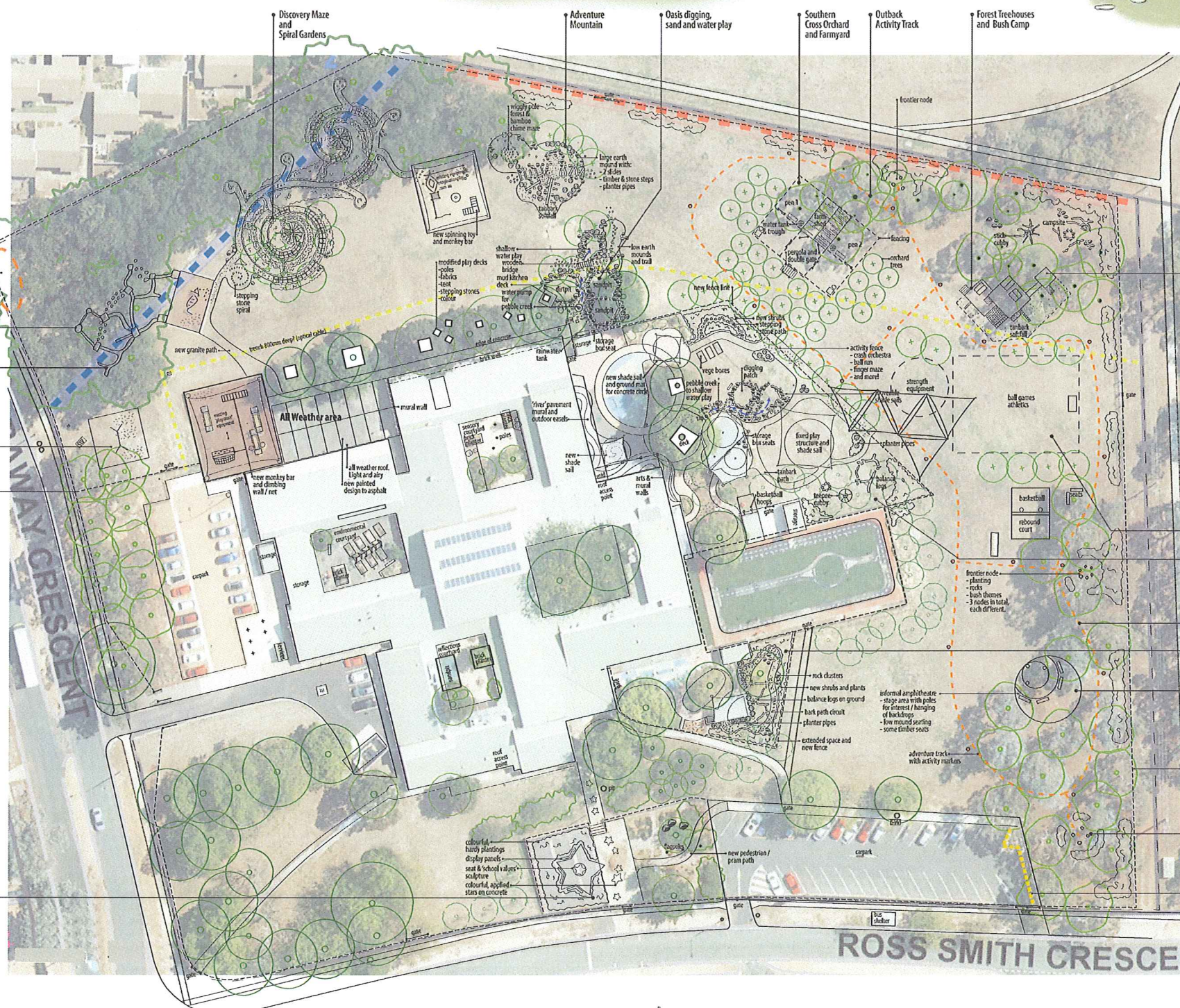
Improved arrival experience and pedestrian access to school grounds

Increased space and activities for Preschool and Childcare courtyards

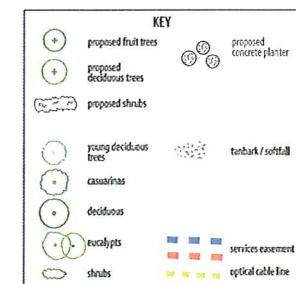
Equipment to be adaptable to enhance novelty and imaginative factors

Additional, secure equipment storage near playzones for better use of staff time

To be designed in accordance with Australian Playground Safety Standards



**Southern Cross
Early Childhood School**



Philip Naez
(61) 82075
Jennifer Jon
(61) 96678
Canberra, Austral
e (61-2) 6258 63
na@hwastry.com