

Who has right of way?

In the following examples consider who needs to go first before the next person can continue. Select in order first to last when you think each person should go.

Click on the person, bike or car.

If you are wrong you will crash and need to try the level again.

Cycle path

Everyone is going in the same direction, cyclist wants to pass the pedestrians. Who needs to move first before the bike can pass?

Cycle path

Correct, now who is next?

Cycle path

Correct, now who is next?

Cycle path



Correct, ring your bell and wait until the path is clear before passing pedestrians. Keep left unless passing. Watch for on-coming traffic before passing. - APR 250(2)

Level passed - Next



You crashed, that person doesn't go yet, try again!

Cycle path



Cyclist on in the blue top wants to pass the pedestrian. Who needs to move first to allow the cyclist in blue to pass the pedestrian?

Cycle path



Correct, who goes next?

Cycle path



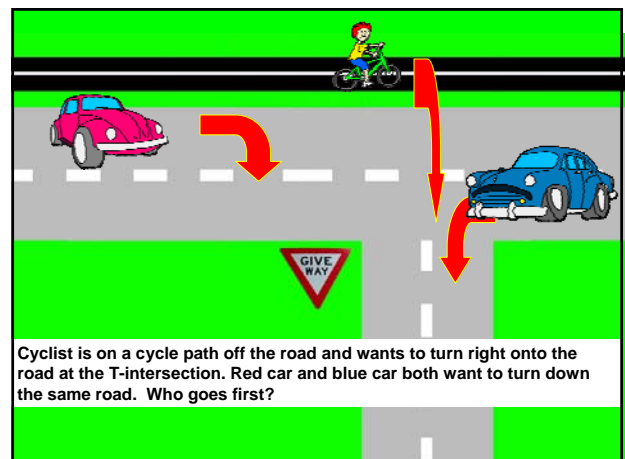
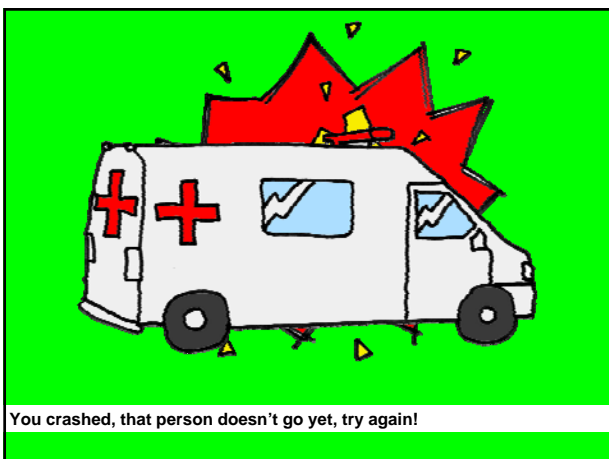
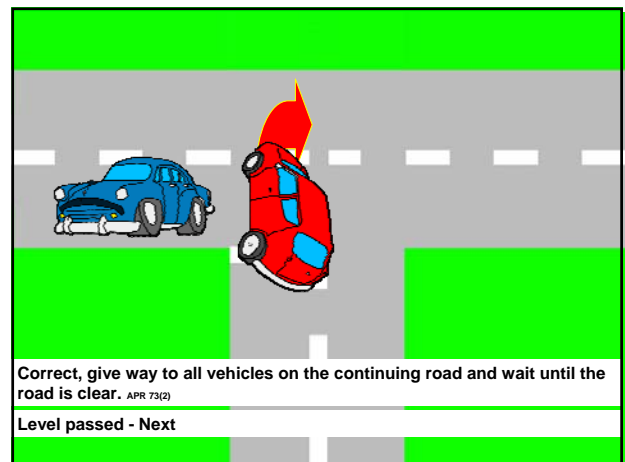
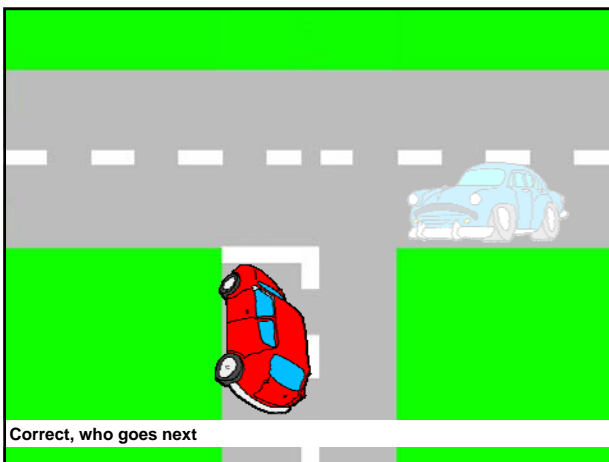
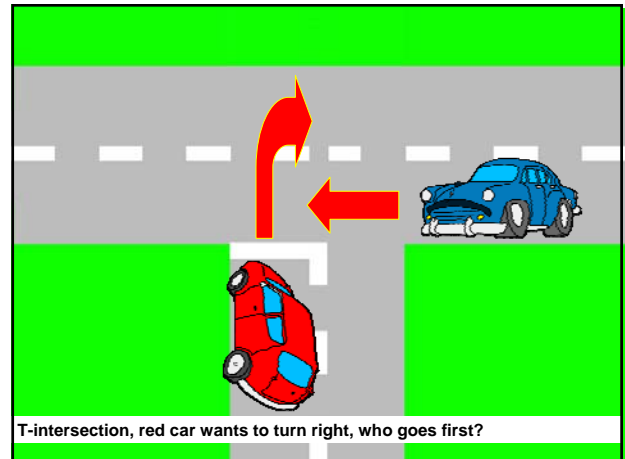
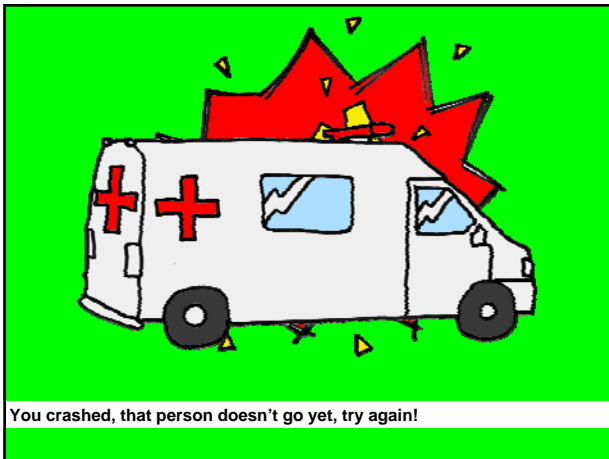
Correct, who goes next?

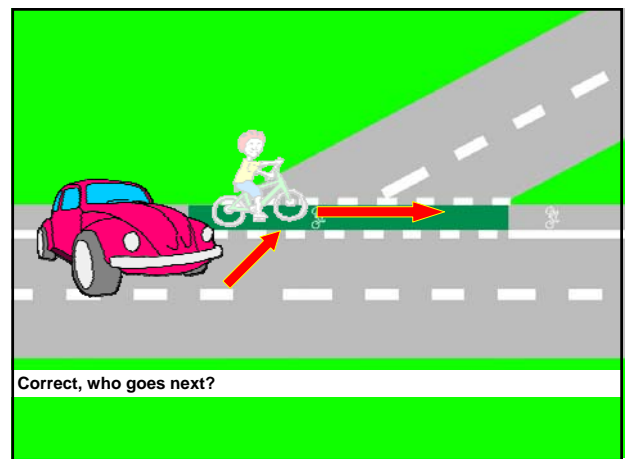
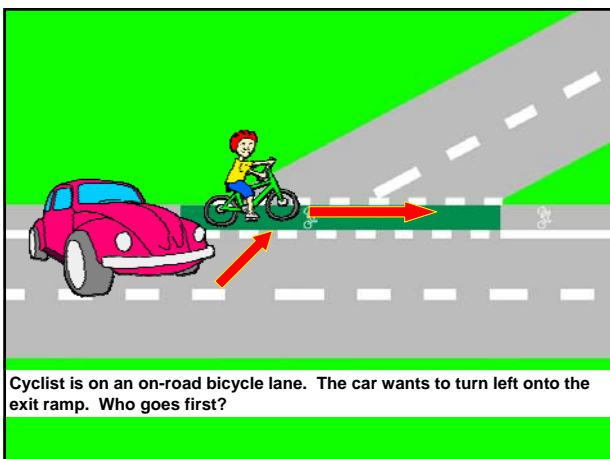
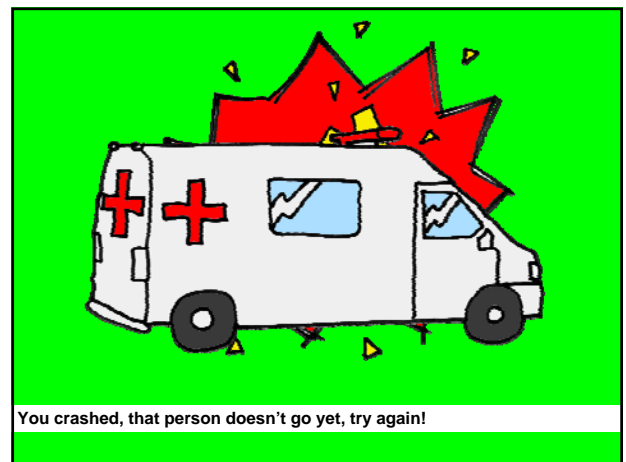
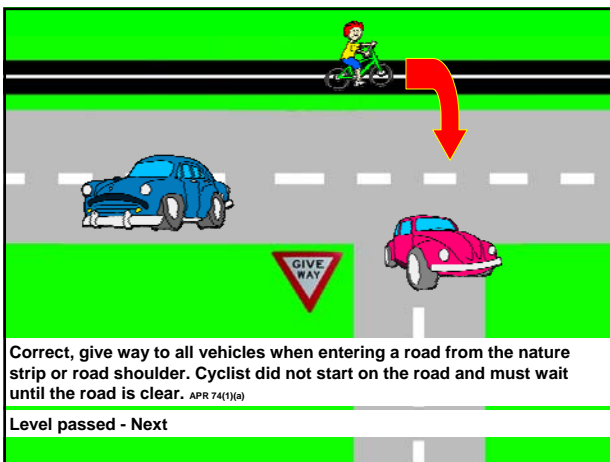
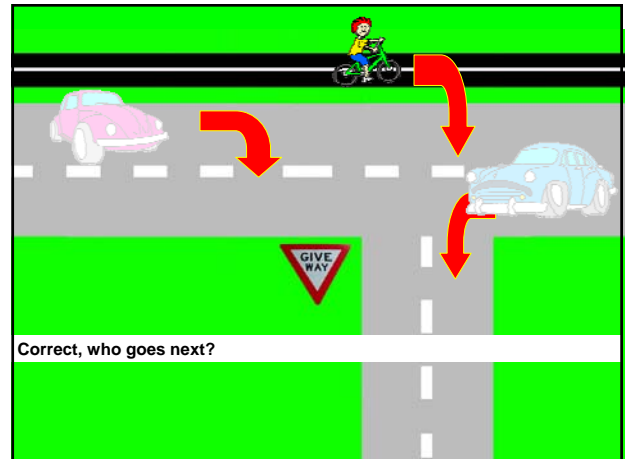
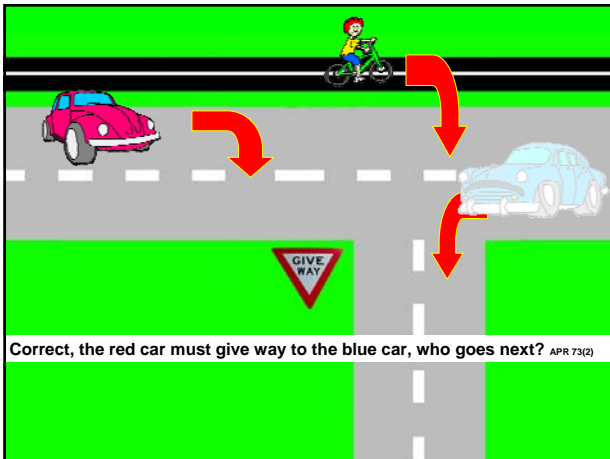
Cycle path

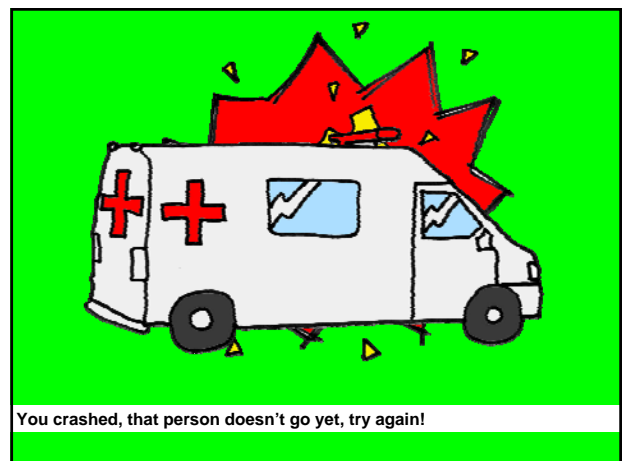
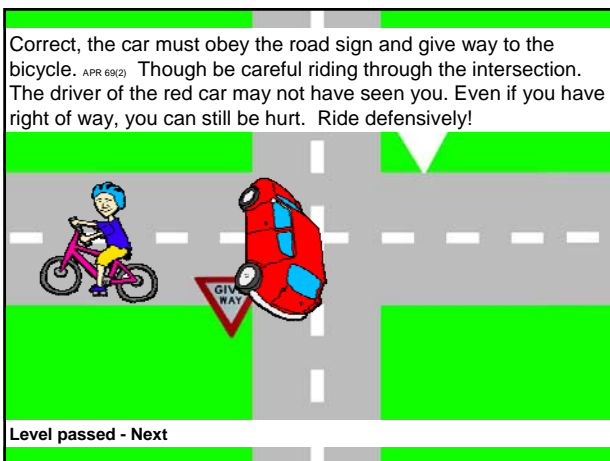
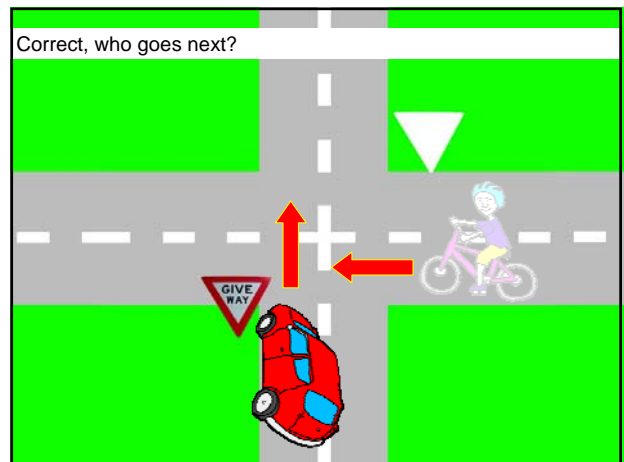
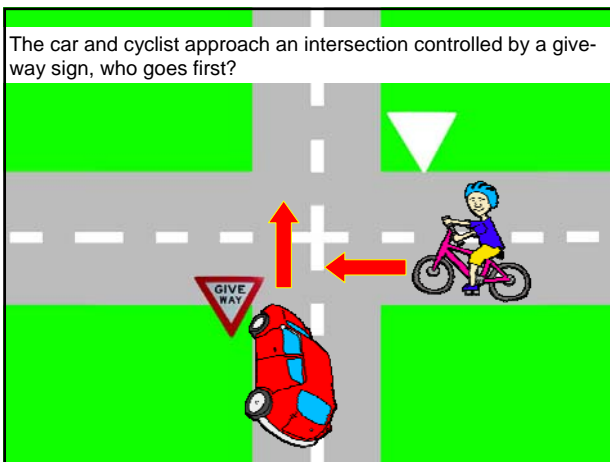
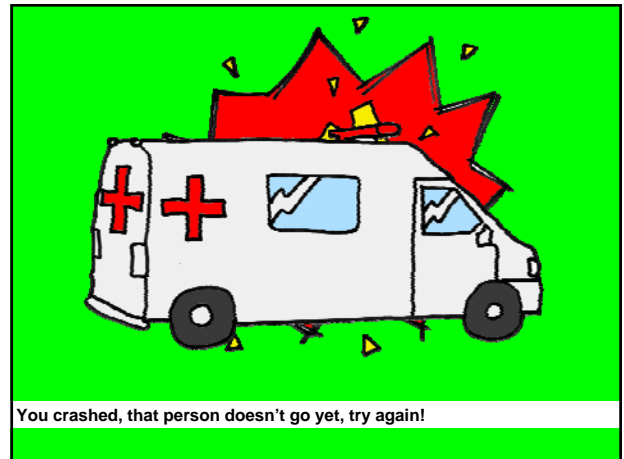
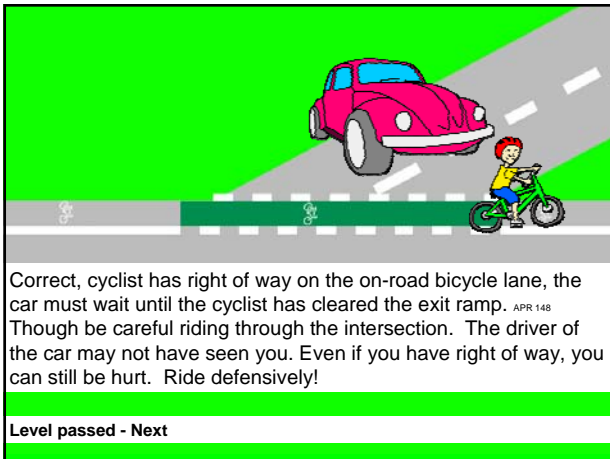


Correct, The cyclist in the blue top must wait until the cyclist in the yellow top has passed and the path is clear. Ring your bell before you pass pedestrian.

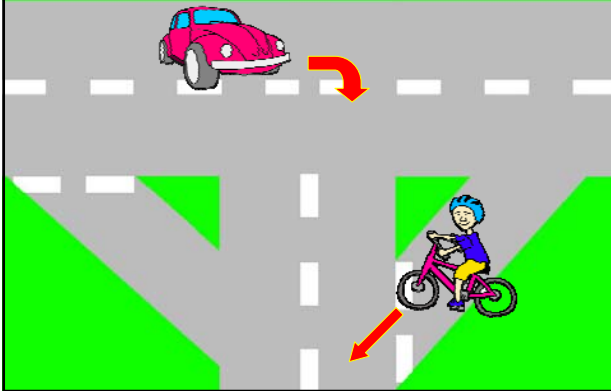
Level Passed - Next



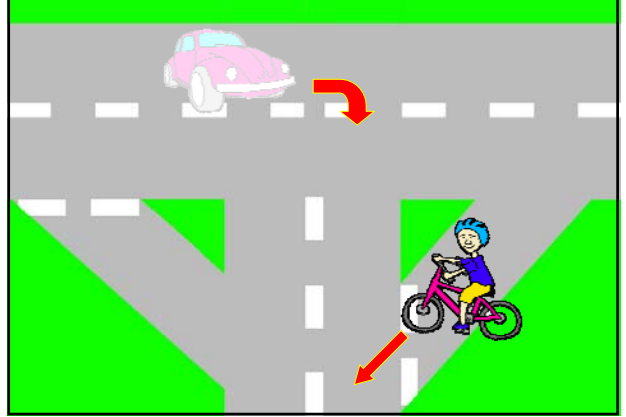




A car and a cyclist approach a T intersection with slip lanes, who goes first?

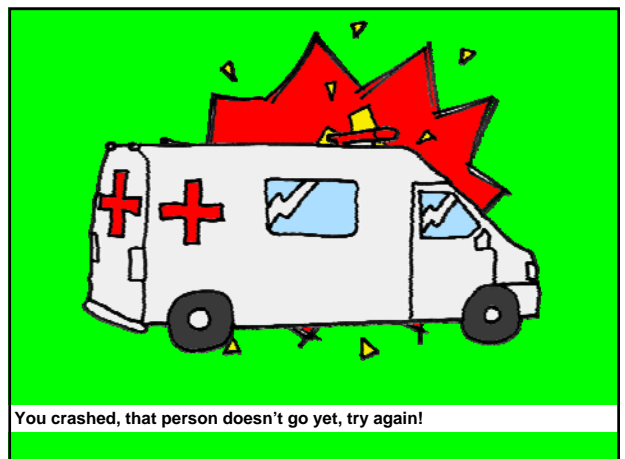
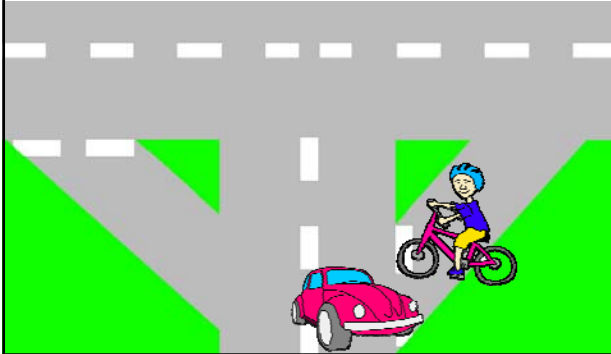


Correct, who goes next?

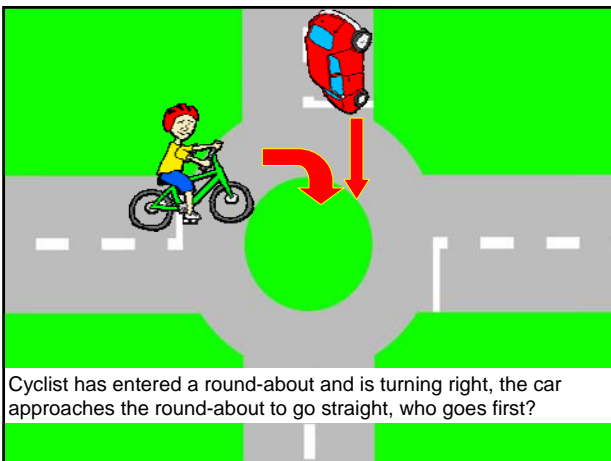


Correct, cyclist must remain behind the broken line until the road is clear. Give way to all vehicles when exiting a slip lane. APR 69 (2a)

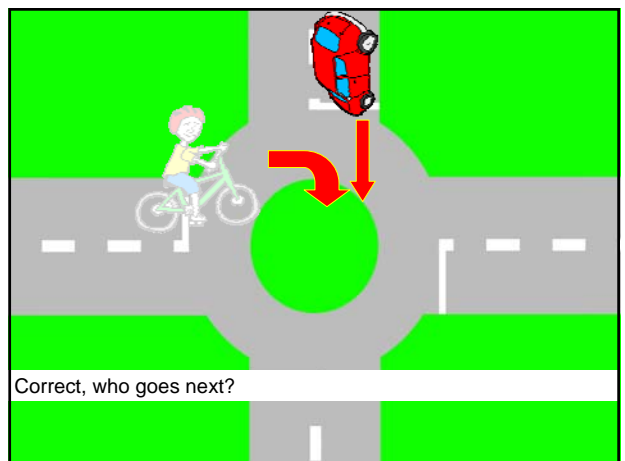
Level passed - Next



You crashed, that person doesn't go yet, try again!



Cyclist has entered a round-about and is turning right, the car approaches the round-about to go straight, who goes first?

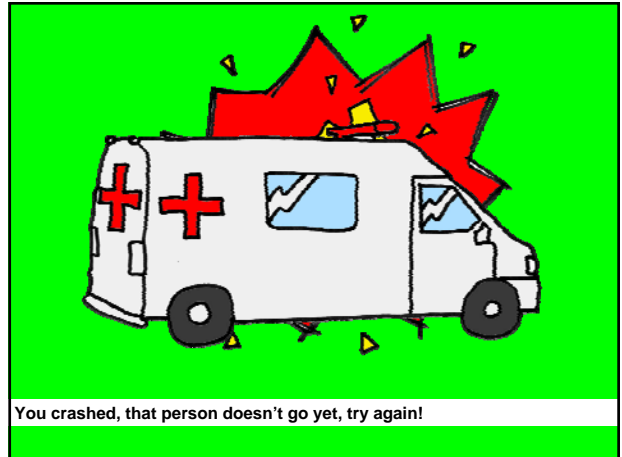


Correct, who goes next?

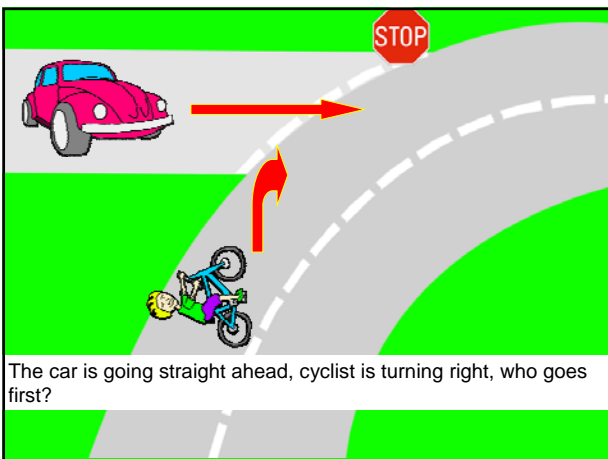
Correct, the cyclist had right of way. Give way to other road users already on the round-about. APR 114 (1)

When riding through a round-about claim your lane, hand signal if you are turning and when you exit. Though be careful riding through the intersection. The driver of the red car may not have seen you. Even if you have right of way, you can still be hurt. Ride defensively!

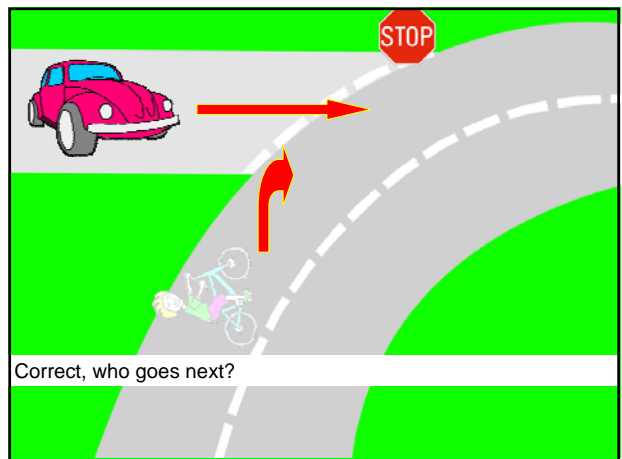
Level passed - Next



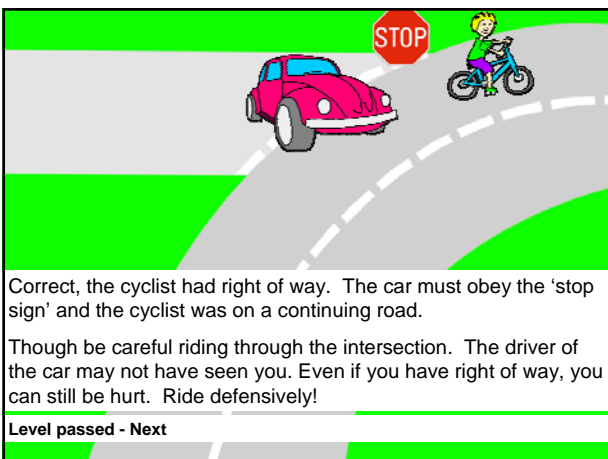
You crashed, that person doesn't go yet, try again!



The car is going straight ahead, cyclist is turning right, who goes first?



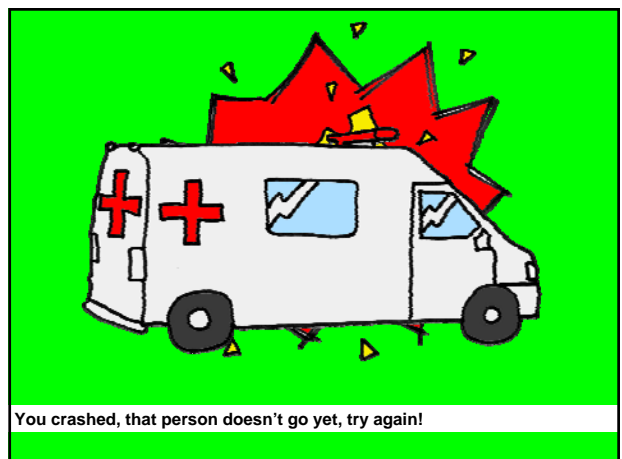
Correct, who goes next?



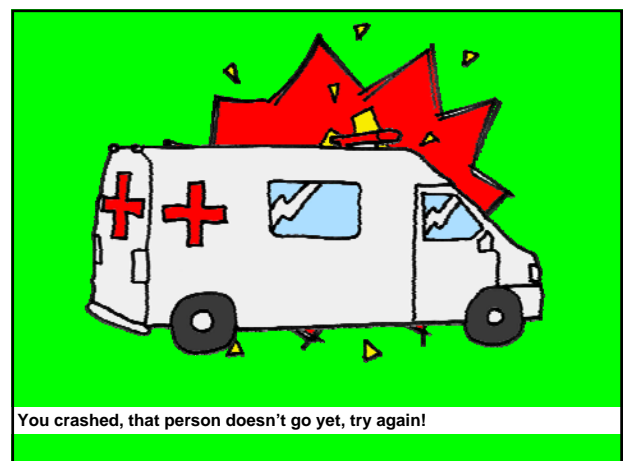
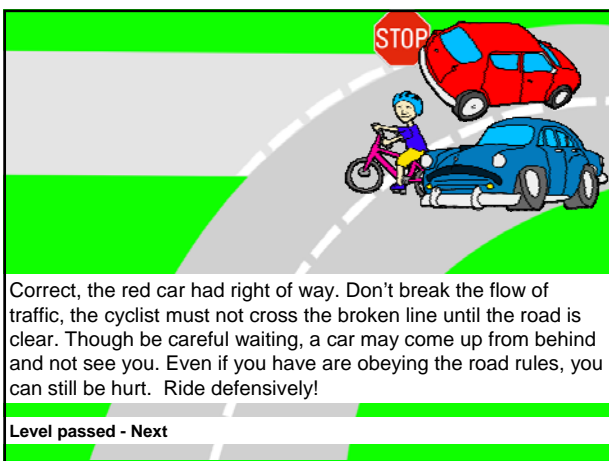
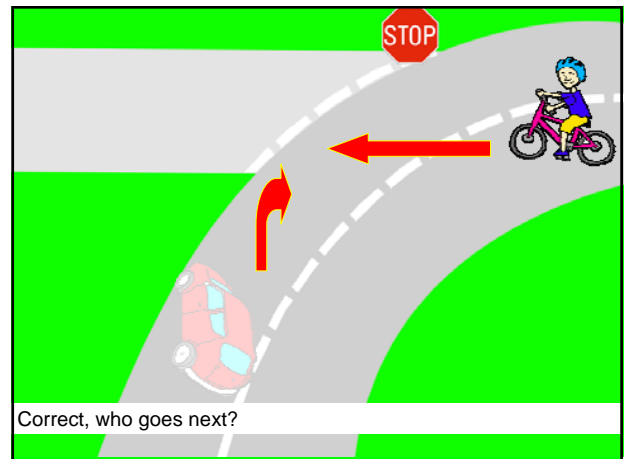
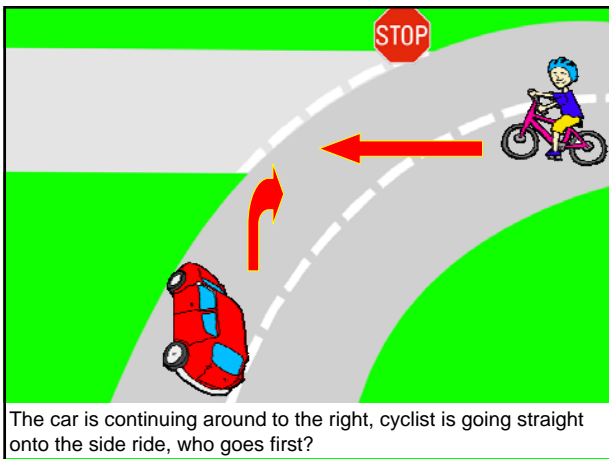
Correct, the cyclist had right of way. The car must obey the 'stop sign' and the cyclist was on a continuing road.

Though be careful riding through the intersection. The driver of the car may not have seen you. Even if you have right of way, you can still be hurt. Ride defensively!

Level passed - Next



You crashed, that person doesn't go yet, try again!



Things to remember when riding your bike
1. Obey road signs
2. Obey road markings
3. Don't cross the lane of continuing traffic until it is clear
4. Don't do unexpected things
5. Ride defensively
6. Plan the safest way to get where you're going
Congratulations you have completed the game